



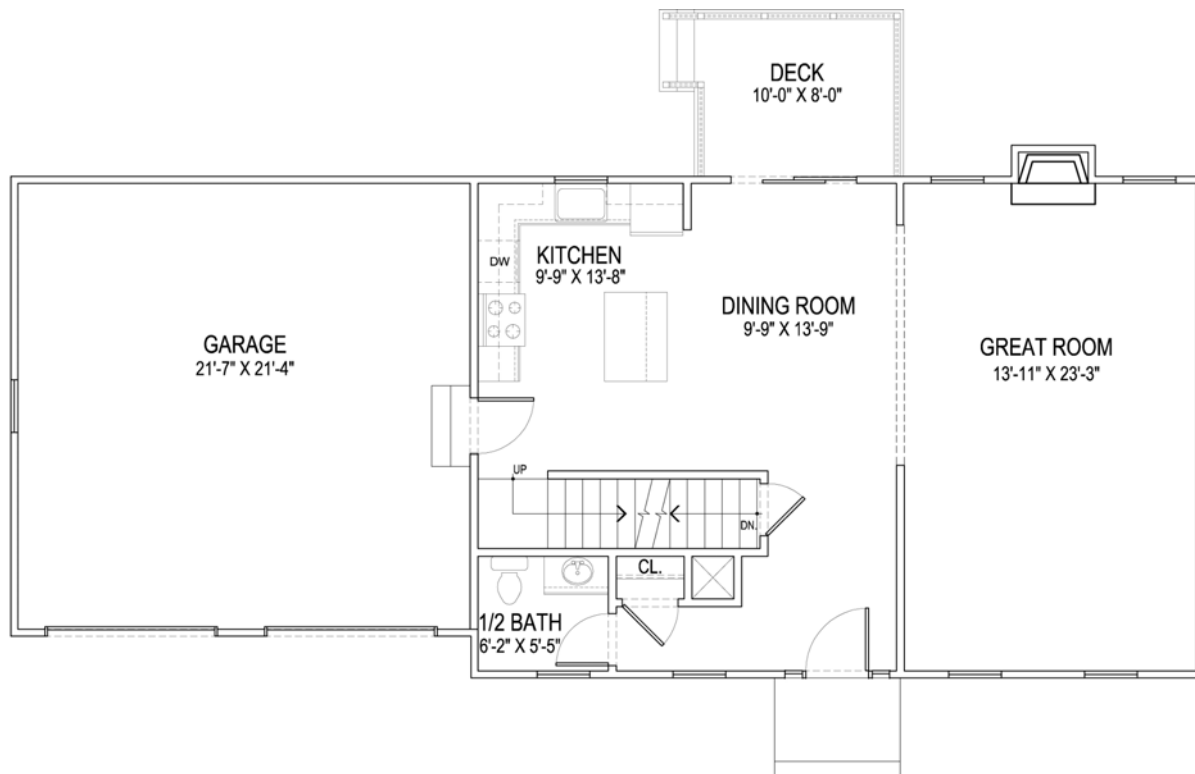
## The York

The York offers style and value in an impressive center entrance colonial. A well light foyer and front hall provide a sense of arrival and access to guest closet and private powder room. From there, the home opens providing flexible living areas. Choose an eat-in kitchen or a kitchen with lounge adjacent to the rear deck or optional four-season room; use the palatial great room as a dining and living room or as a spacious fireside family room.

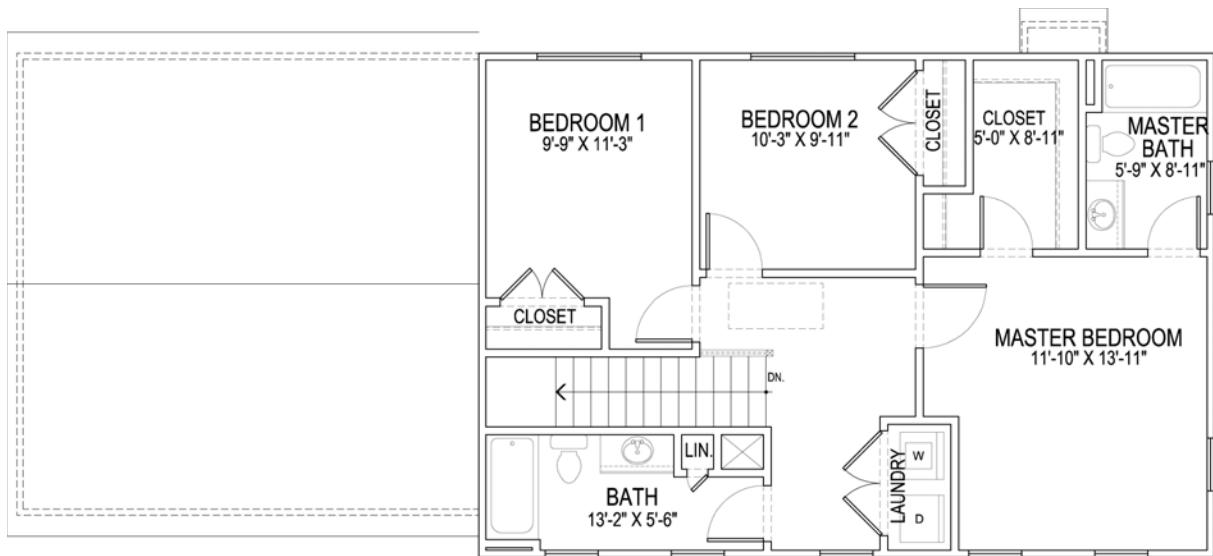
The 2nd floor offers a master suite with walk-in closet and private bath, 2 family bedrooms, hall bath, and laundry room.

|   |                                |   |              |
|---|--------------------------------|---|--------------|
| Total Living Area: 1,764 SF<br>2,254 SF w/expanded plan | Traditional 2nd floor bedrooms | 6 Rooms   | 3 Bedrooms   |
| 2.5 Baths   | Fireplace                      | Front Porch & Deck<br>(Four-season Room optional) | 2-car garage |

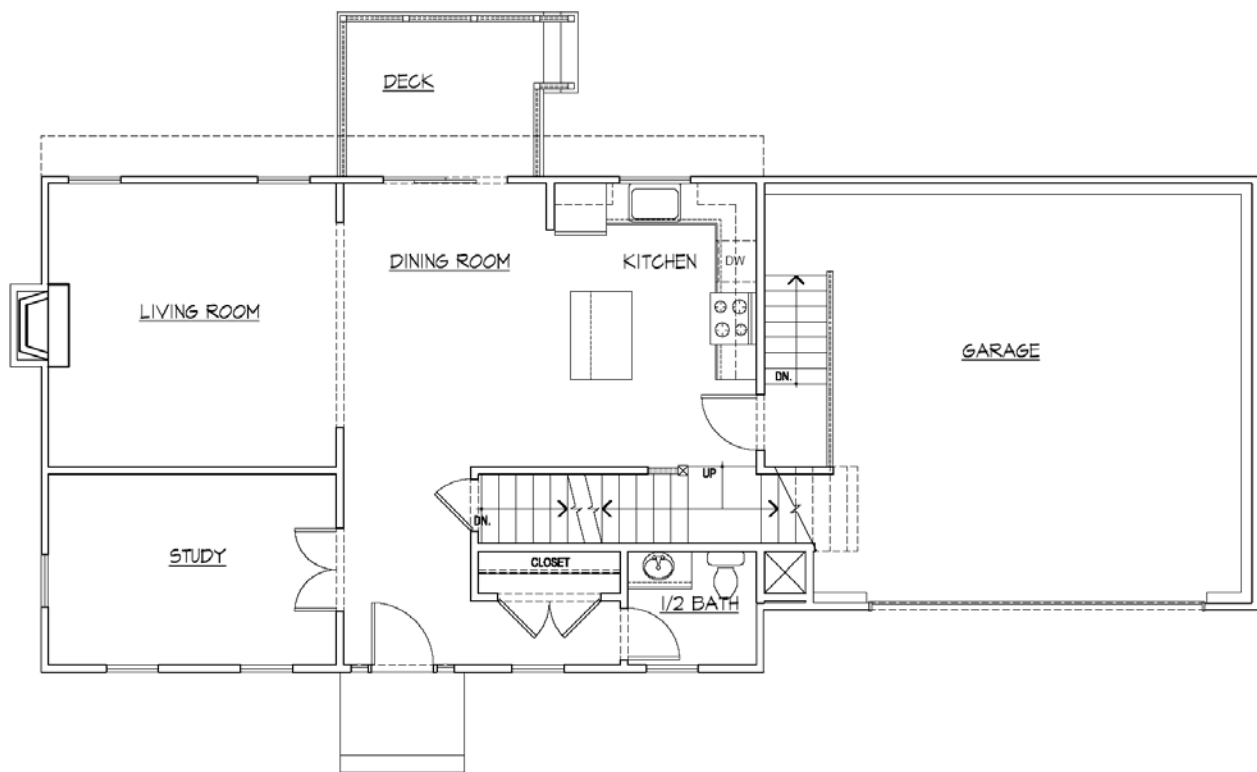
## The York . Standard First Floor Plan



## The York . Standard Second Floor Plan



## The York . Expanded First Floor Plan



## The York . Expanded Second Floor Plan

