



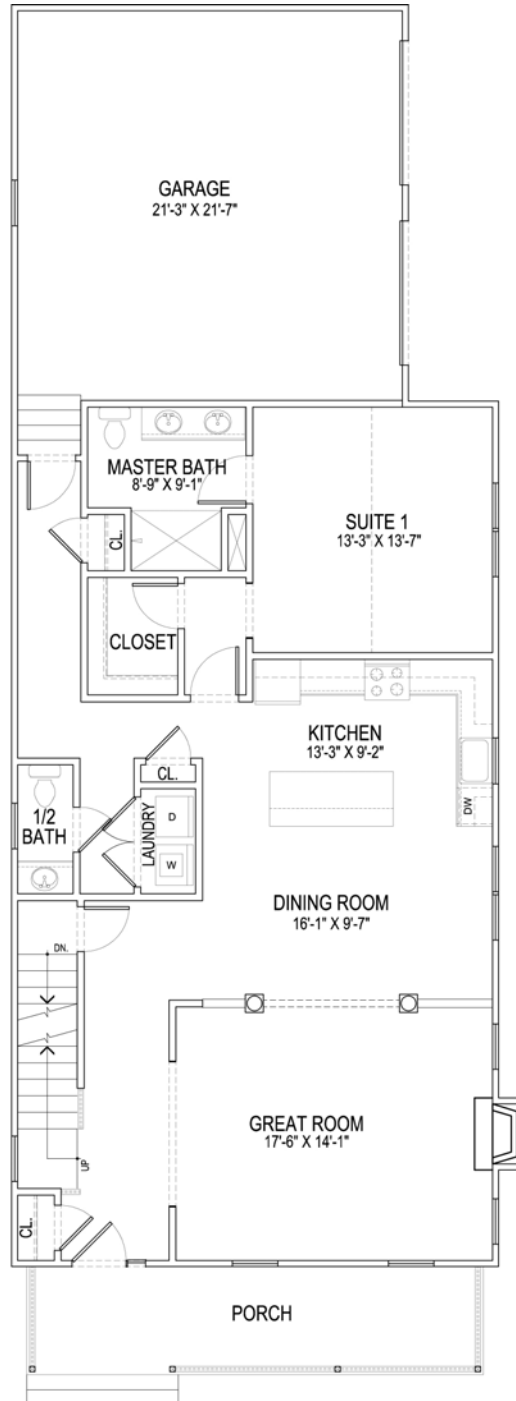
The Weston

The Weston blends casual comfort with classic details. A stately front gable colonial, this home has a welcoming farmers' porch and a rear garage. A columned entrance to the central dining area accents the fireside great room. The modern center-island kitchen adjoins the laundry, powder room, and back hall. A private first floor bedroom suite provides an inviting retreat for the owner or guests, both will appreciate the walk-in closet and private bath with 5-foot shower.

The spacious 2nd floor invites multiple uses; a primary master bedroom with a lofted study and a guest room, or perhaps this area is reserved guest quarters and a home office. Either will be right at home here.

Total Living Area: 2,124 SF	Dual master bedroom suites one each on 1st and 2nd floors plus third bedroom and loft	6 Rooms	3 Bedrooms
2.5 Baths	Fireplace	Front Porch & Deck	2-car garage

The Weston . First Floor Plan



The Weston . Second Floor Plan

