



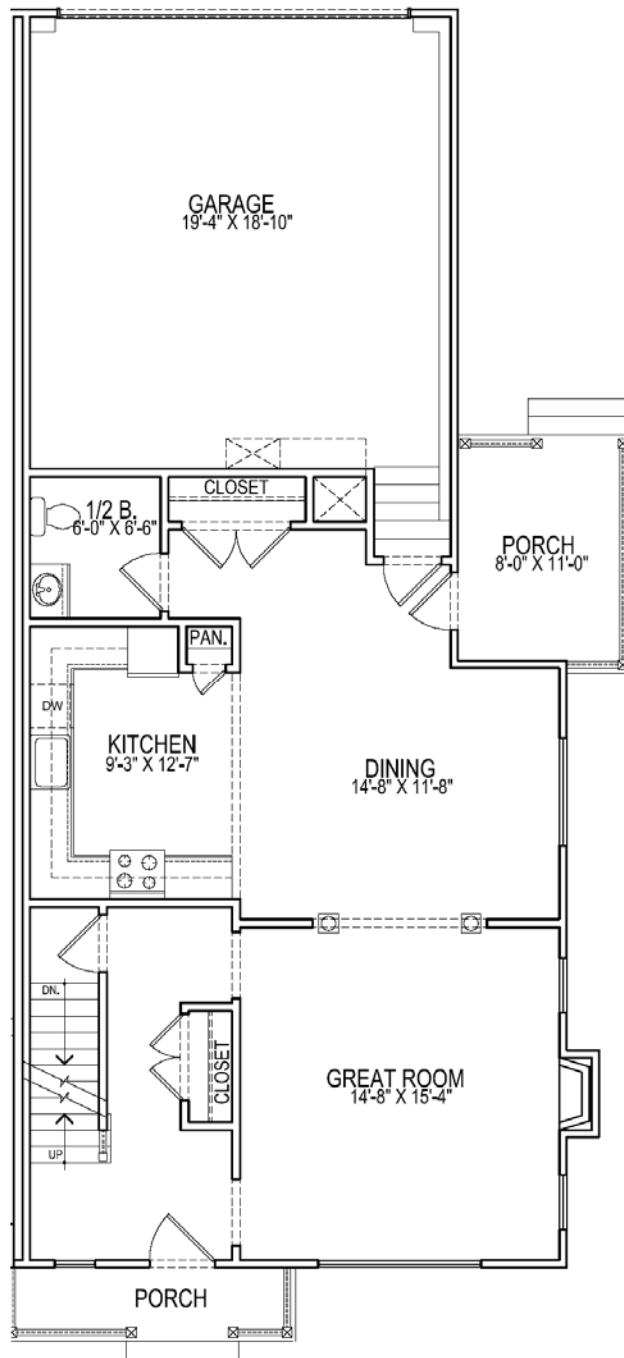
The Village Center (Town Homes)

The Village Center Town homes offer a unique blend of defined space and flexible openness. A covered front porch entry leads to a foyer hall with open staircase and guest closet. The large well-light great room is subtly divided from the formal dining room by a wide columned opening. The adjacent kitchen offers ample cabinets, pantry closet, and an optional cabinet island or peninsular. The back hall accesses the side porch, garage, double closet, and private powder room.

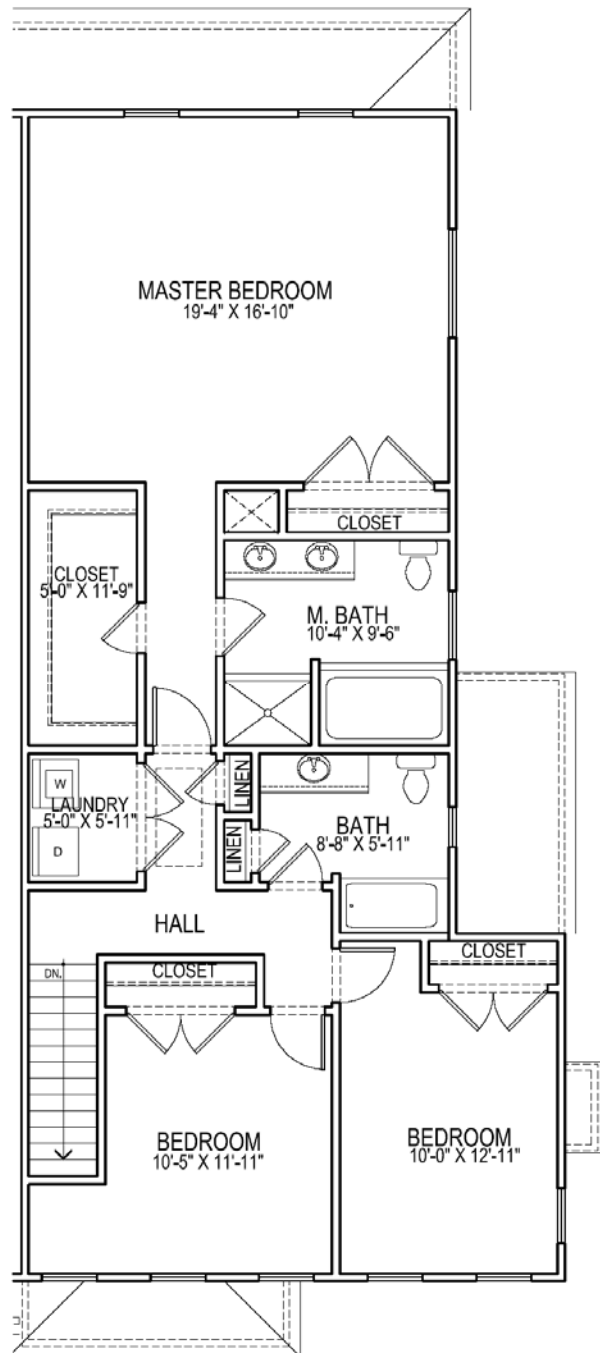
The 2nd floor provides a generous master suite with large walk-in and second closet and spa-bath, 2 large family bedrooms, hall bath, 2 linen closets and laundry room.

Total Living Area: 1,938 – 2,095 SF	3 Bedrooms	2.5 Baths
Front Porch	Side Deck	2-Car Garage

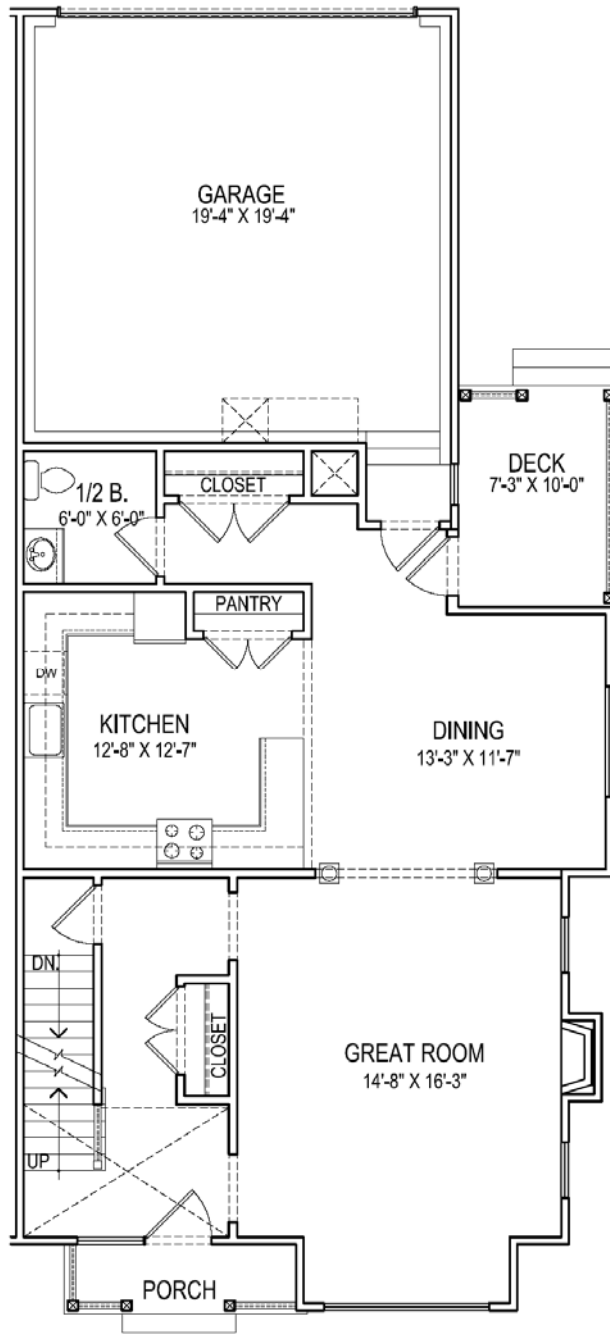
The Village Center (Town Homes) . The Lenox 1st Floor Plan



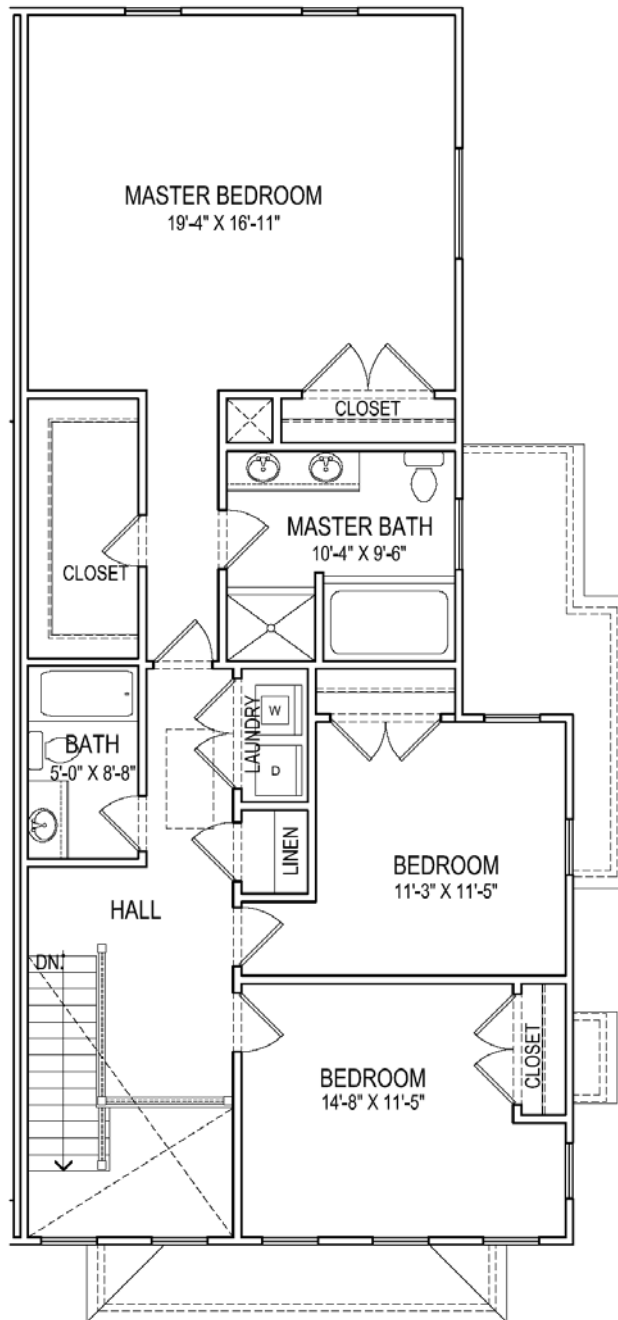
The Village Center (Town Homes) . The Lenox 2nd Floor Plan



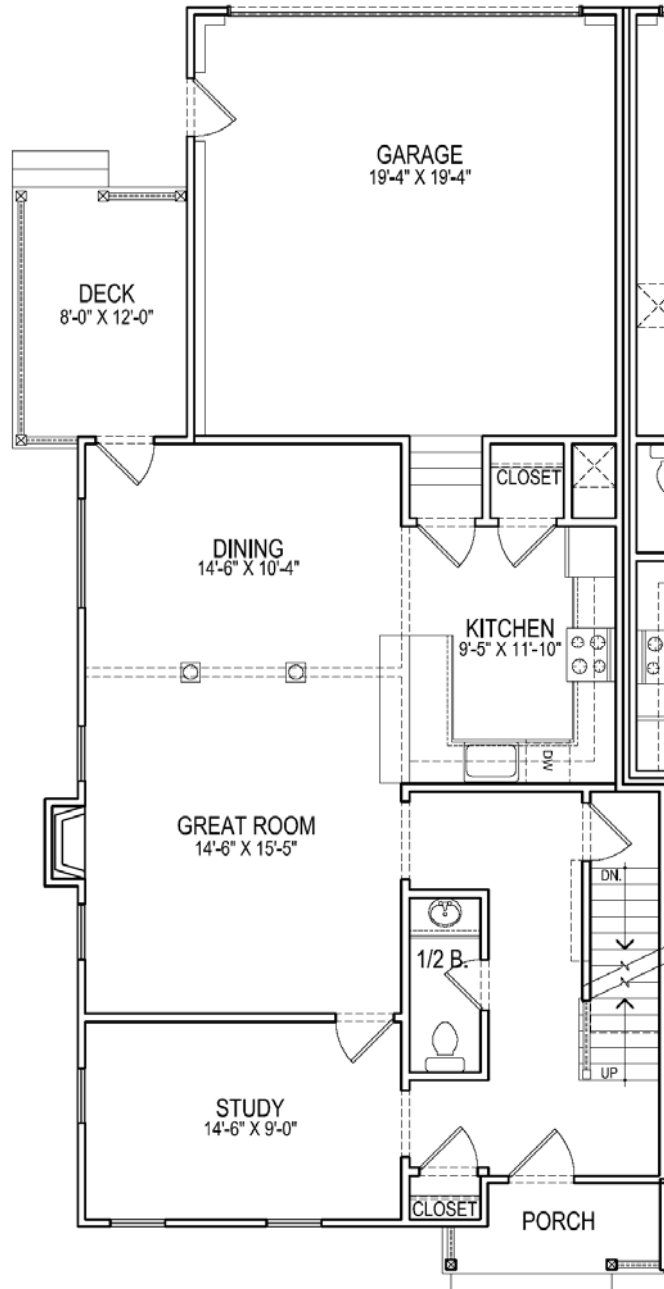
The Village Center (Town Homes) . The Hadley 1st Floor Plan



The Village Center (Town Homes) . The Hadley 2nd Floor Plan



The Village Center (Town Homes) . The Whitman 1st Floor Plan



The Village Center (Town Homes) . The Whitman 2nd Floor Plan

