

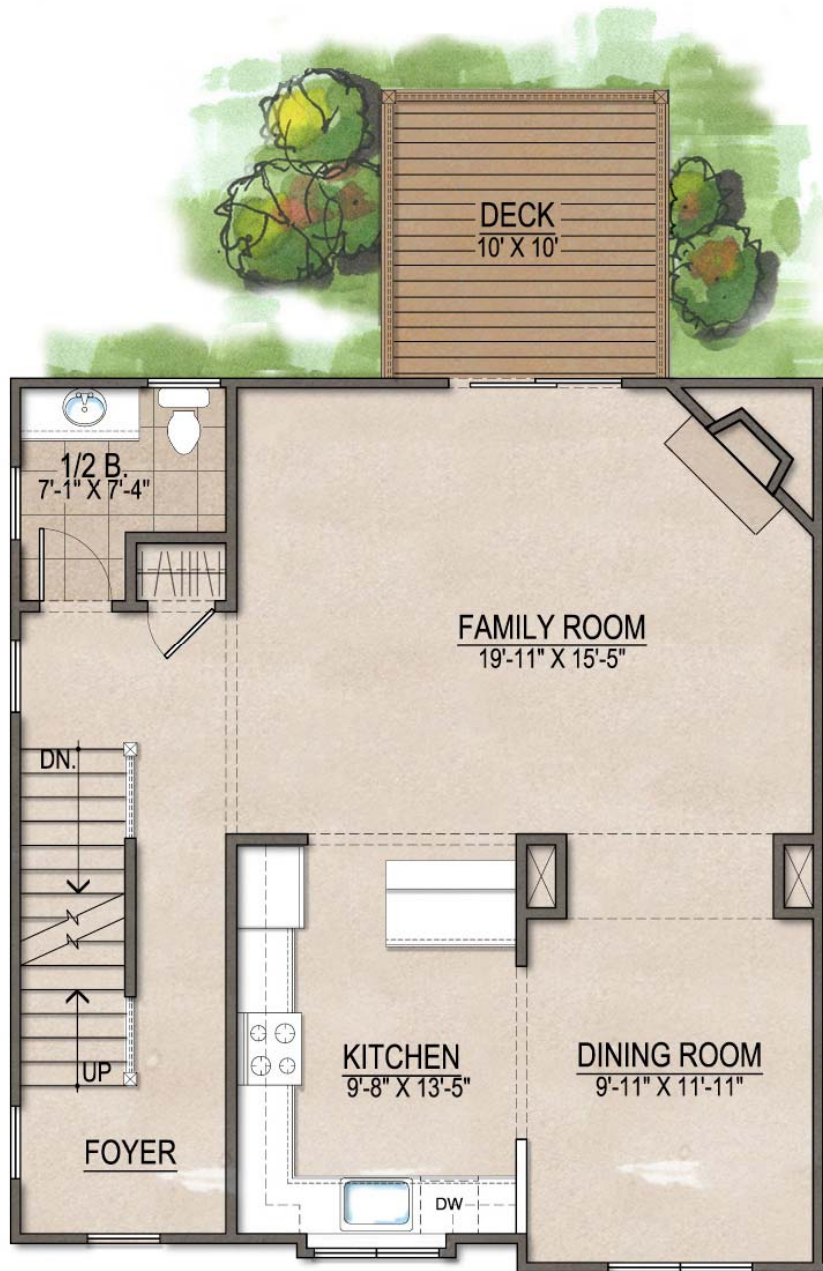


## Baldwin Village (Town Homes)

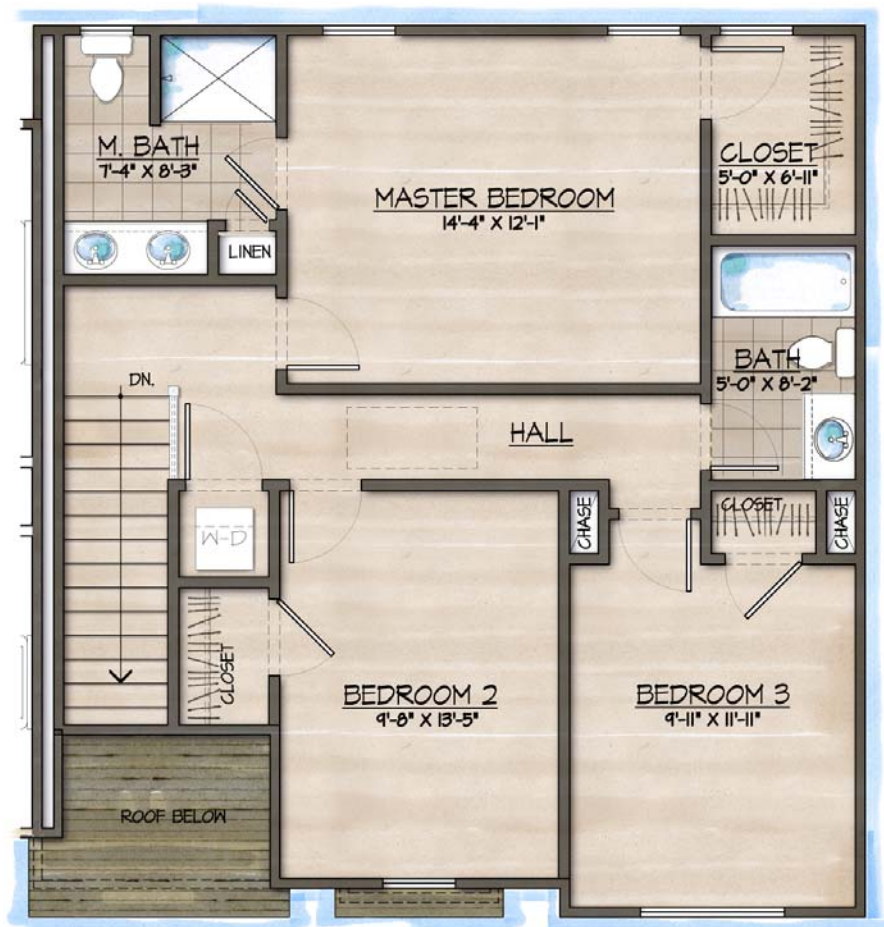
The final phase at The Villages at Stow is Baldwin Village. We are now offering an intimate number of newly designed townhomes nestled away in a more private area. These homes feature open style floor plans perfect for hosting your next gathering. All townhomes will have three bedrooms, 2.5 baths and 2 car garages. Baldwin Village is the best of both worlds, a private setting just a hop skip and a jump away from the heart of the neighborhood, the Village Green and The Cider House.

Total Living Area: 1,817 - 2,009 SF (with optional study)	3 Bedrooms	2.5 Baths
---	Deck	2-Car Garage

## Baldwin Village (Town Homes) . Main Floor Plan



## Baldwin Village (Town Homes) . Upper Level Floor Plan



## Baldwin Village (Town Homes) . Basement Floor Plan

